

FIRST LOOK



The mixed-use scheme, which features eight buildings of varying heights, introduces streets, lanes and courts.

Stephen Taylor's 'piece of city' is heart of Worcester regeneration

Stephen Taylor Architects is preparing to submit plans for a 17,000sq m mixed-use scheme on the outskirts of Worcester's town centre.

Occupying a steeply sloping 0.5ha oval site immediately in front of Shrub Hill Station, the scheme is intended to jump-start the regeneration of the area, which was formerly given over to heavy industrial developments servicing the city's 19th century railway network.

"It's probably the most important project we've done in England and it's a very unusual project, because it's really a piece of city," said Taylor, who has been nurturing the project for two and a half years.

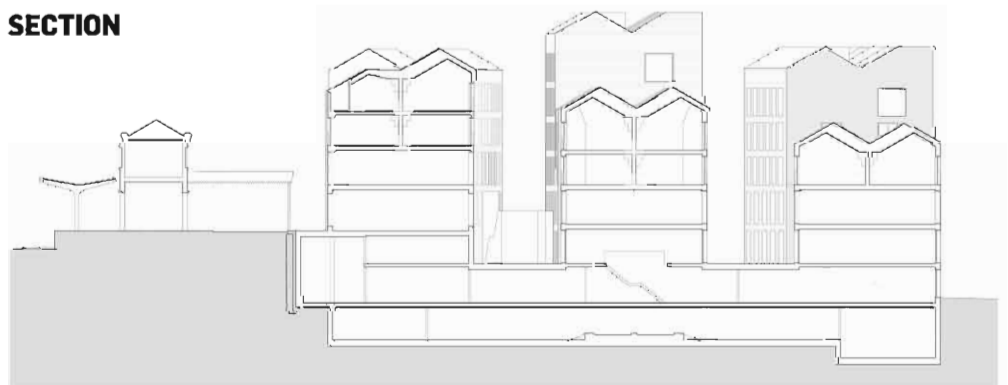
"The last time one architect had control over a similar group of buildings was the Barbican Centre in London."

The scheme features eight buildings, ranging from four

PLAN



SECTION



Housing is on upper levels.

to seven storeys high, arranged across a series of terraces to preserve views of Worcester Cathedral from the station.

The upper levels are given over solely to housing, a band of office and work space fills the first floor level while retail, restaurant and café units

occupy the ground and below-ground levels.

A series of new public streets, lanes and courts create easy routes around the site and into the city.

"It combines a lot of things we've been exploring about reconciling private space with

the public realm of the city," said Taylor. "It's really about creating the qualities of an intimate city."

The project will take two years to complete and, pending planning approval, is due to start on site later this year.